

Setting up browsers to automatically open Java forms in Oracle

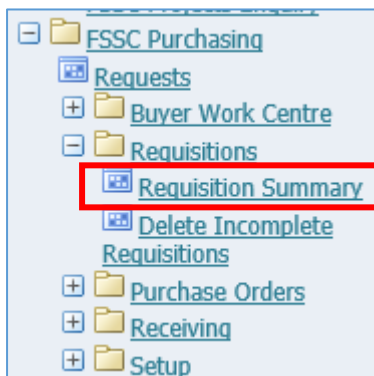
This document sets out the steps for enabling Java forms to open automatically in browsers other than Internet Explorer 11.

What follows are instructions on how to configure, where necessary, Microsoft Edge, Mozilla Firefox and Google Chrome, to allow Java forms to open.

PLEASE NOTE: The information below is intended for users who choose to use a browser, other than the recommended Internet Explorer 11. The FSSC do not support these browsers and therefore do not have any control over or, take any responsibility for the updates and configuration changes to them.

Microsoft Edge

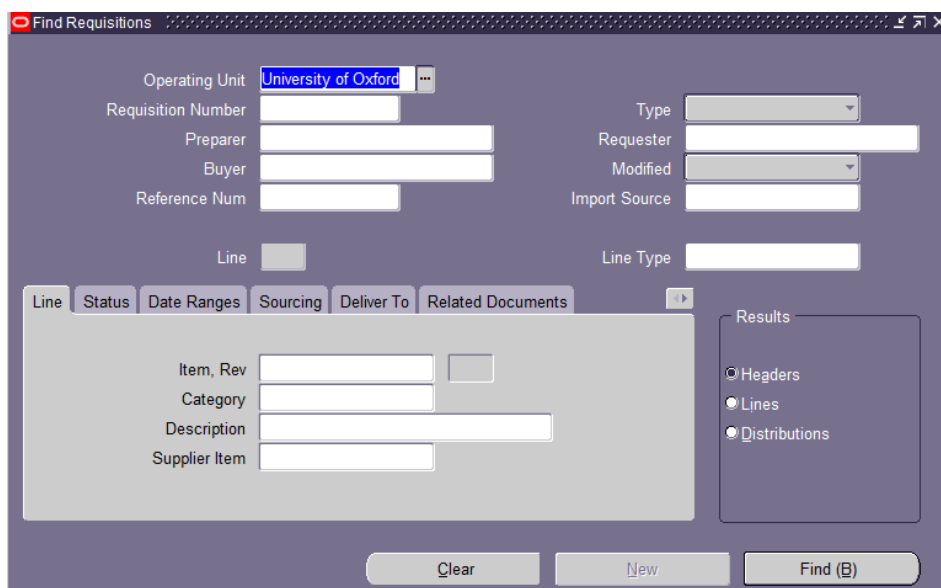
1. From the Home Page, select an option that opens a Java form



2. At the bottom centre of the screen the following pop up will appear. Click on 'Open'

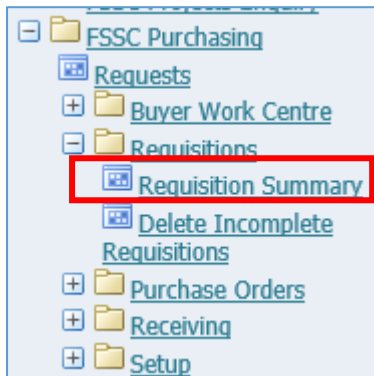


3. The Java form will open in a new window on your desktop.

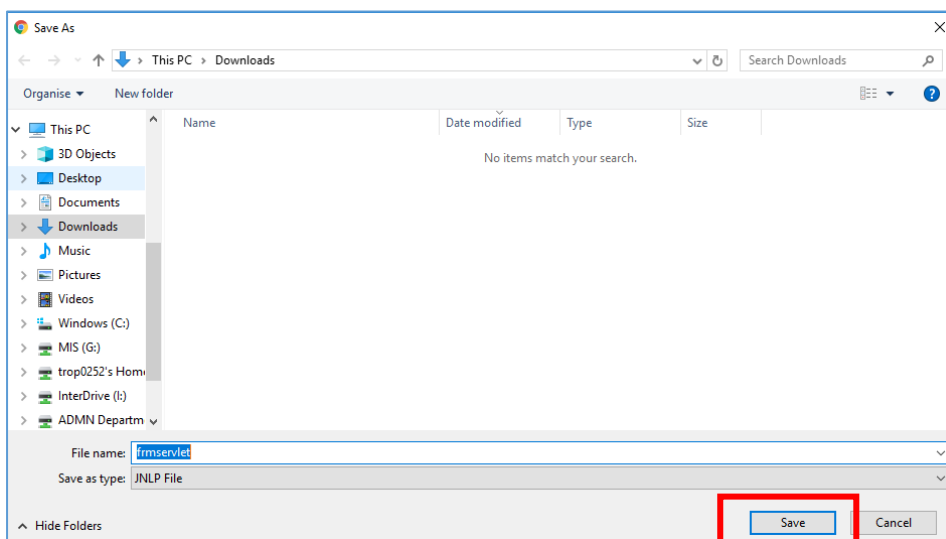


Chrome

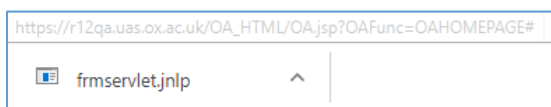
1. From the Home Page, select an option that opens a Java form



2. A 'Save As' window will open. Click 'Save'



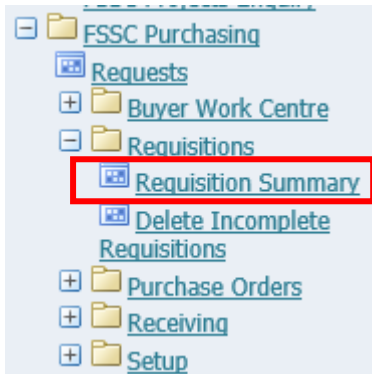
3. The 'frmservlet.jnlp' file will download and appear at the bottom of the Home Page screen. Click on it.



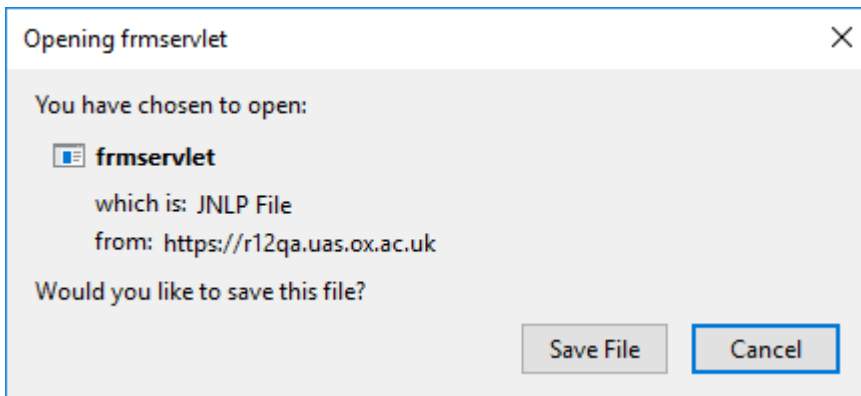
4. The Java form will open in a new window on your desktop.


Mozilla Firefox

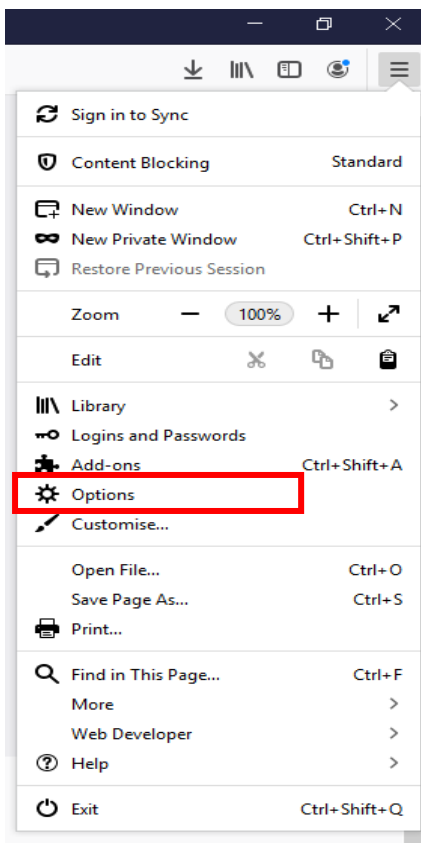
1. From the Home Page, select an option that opens a Java form



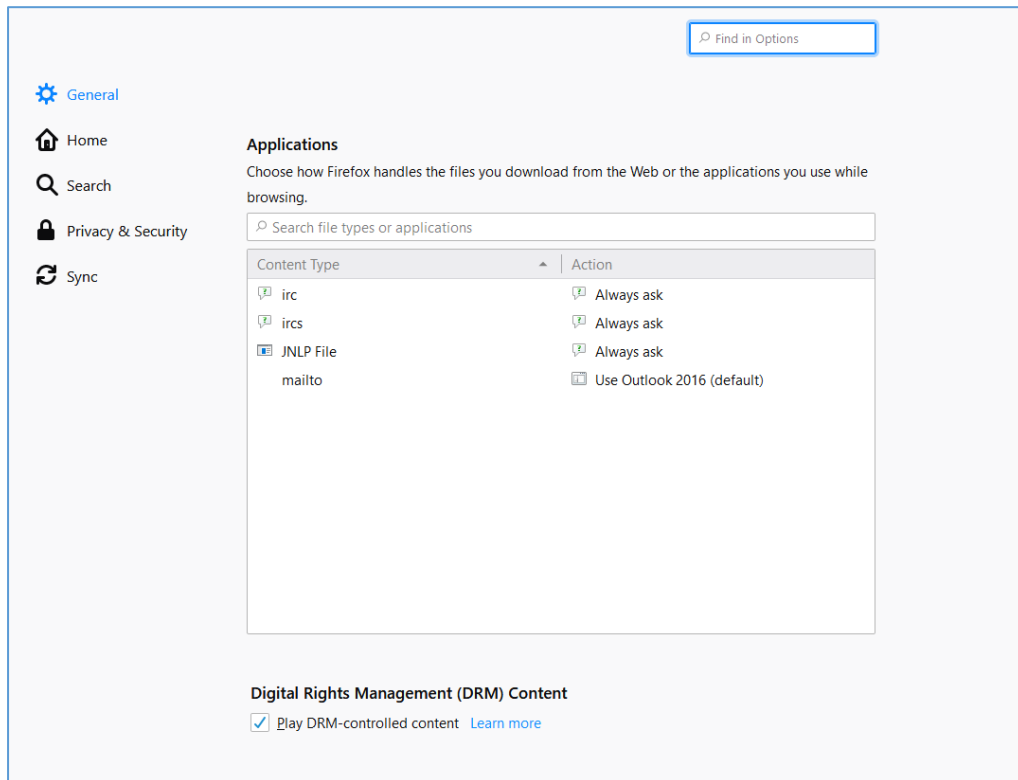
2. When prompted click on 'Save File'



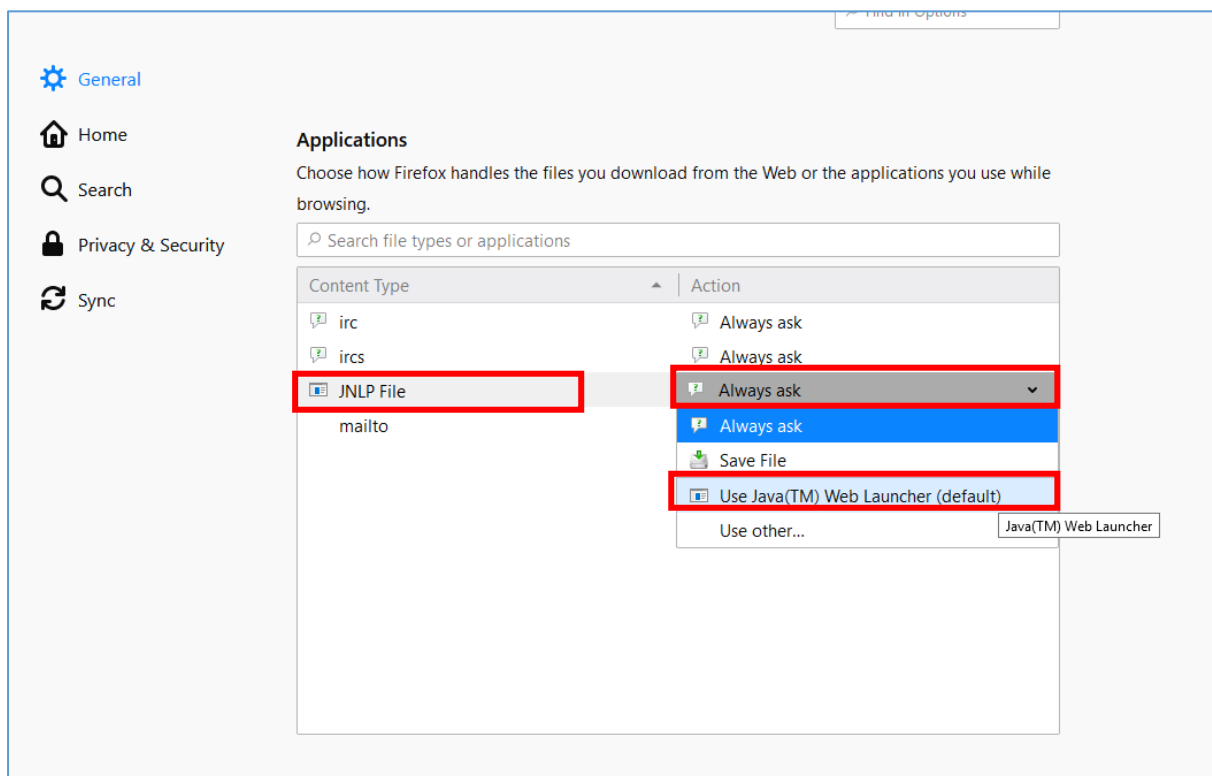
3. In Firefox, click on the menu button  towards the top right hand edge of screen and click 'Options'



4. Scroll down to the 'Applications' sub-section

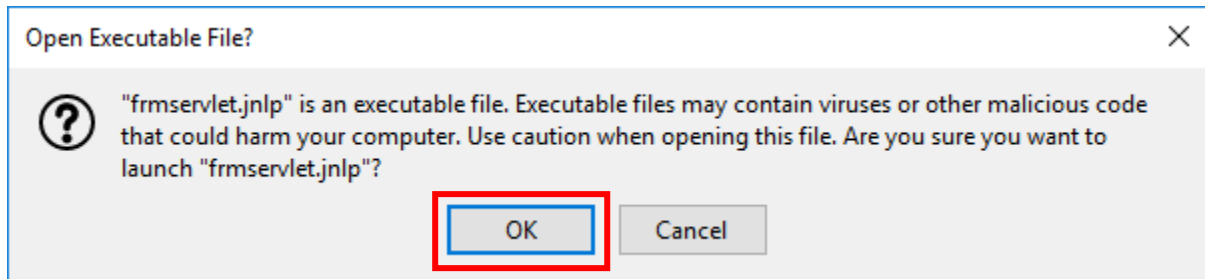


5. To the right of the option 'JNLP file', click on the drop down menu and select 'Use Java(TM) Web Launcher (default)'



6. Close the 'Options' tab

7. Click on the menu item you initially selected under step 1, e.g. 'Requisition Summary'. You will see the following window. Click the 'OK' button.



8. The Java form will open in a new window on your desktop.